

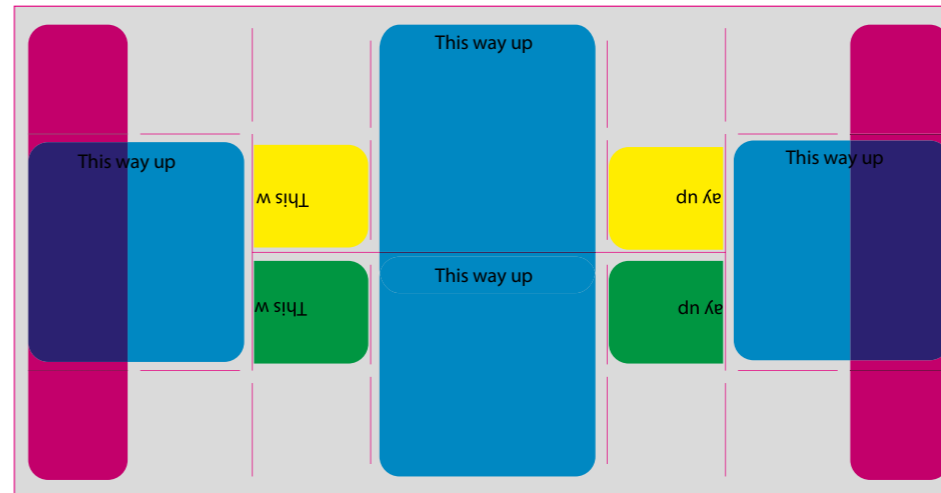


Ideally exported as a 'PDF/X-1a' or similar including:
 -bleed
 -crop marks



If provided as the raw file, please save with:
 -Text outlined
 -All linked images and fonts
 -Include a low res PDF for reference

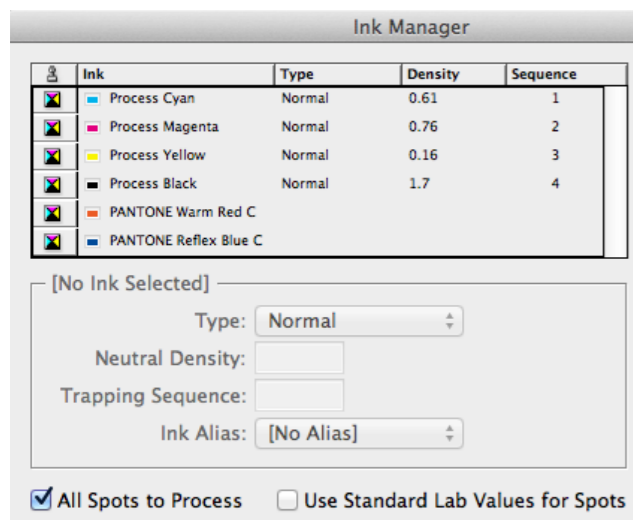
Supported Formats



Please make sure you are aware of the orientation of each panel - it is useful to print the template out and make a physical copy.

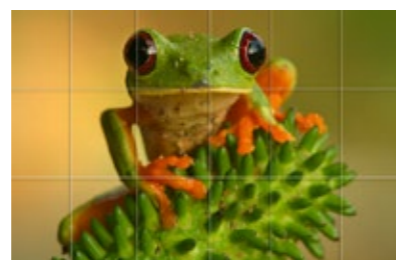
Please do not alter or move the cutting guide in any way, this is very important!

Cutting Guide



Please ensure your artwork is supplied with only a 4 colour process.

Everything must be converted to CMYK, and all spot colours must be removed, unless you have discussed printing a special colour with the team. If you require any special inks, please state the Pantone code in your product spec.



Cracking on folds

Please be wary of any heavy or dark ink coverage, it can create cracking on the folds - causing the white card to show through.

Colour Process



Infinity Card

Please try to avoid having text running over the panels, and if wanting a border on any panels, please make sure it's at least 2mm.

The smaller the text you have running over any cuts or folds, the more obvious any movement will be. Anything under 8pt needs to be contained on one panel.

When including the bleed, please make sure you have repeated your artwork on either side - to compensate for any movement in the production process.

Misalignment

If you have any questions or need any help with the artworking process please don't hesitate to contact the Alpha Card Design Team on 0843 21 000 26

Thank you!